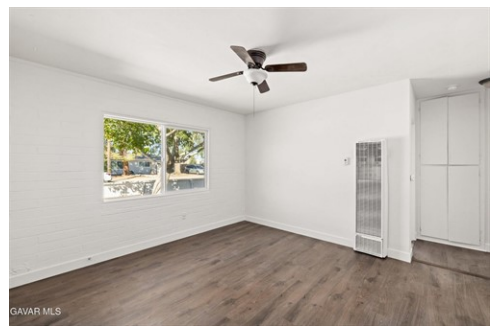




\$ 399,900



45148 Date Ave, Lancaster, CA 93534

- » Beds: 2 | Baths: 2 Full
- » MLS #: 25007762
- » Multi-Family | 948 ft<sup>2</sup> | Lot: 8,712 ft<sup>2</sup>
- » More Info: [45148DateAve.IsForSale.com](http://45148DateAve.IsForSale.com)



The Hier Advantage Real Estate Team

(661) 992-2407 (Joshua)  
(661) 992-2741 (Michael )  
(661) 406-1562 (Ron)

RealtorJoshuaVigil@gmail.com  
<https://thehieradvantage.com/buyers-sellers/>

The Hier Advantage Real Estate  
1008 W Ave. M4, Suite B  
Palmdale, CA 93551  
(661) 992-2407

This updated duplex features two units, each offering one bedroom, one bathroom, and a kitchen. Recent improvements include a brand-new roof installed just three months ago, fresh interior paint throughout, new laminate flooring, and new fencing for added privacy. Situated on a spacious 8,800 sq. ft. lot, the property offers separate backyards for each unit as well as convenient drive-in access from the rear. Ideally located near schools, shopping, dining, and just a few miles from the 14 Freeway (for commuters), this home offers excellent potential for investors seeking rental income or families looking for multigenerational living. Don't miss your opportunity to view this move-in ready duplex before it's gone!

